

SCIOLUX

KIT CHI

60W

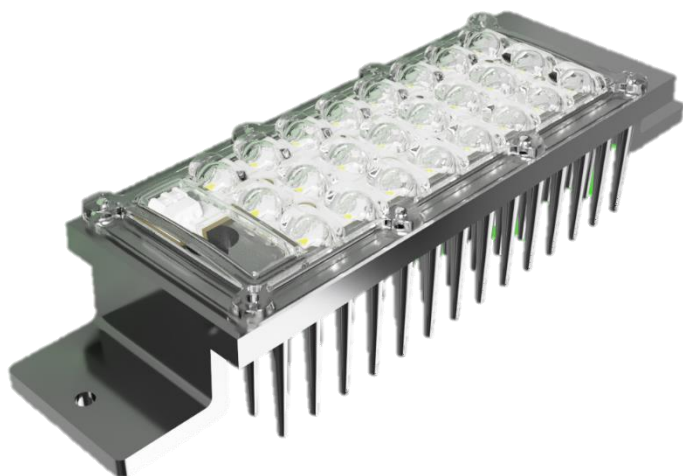


Image for reference only.

FEATURES

- Rectangular heat sink of 254mm x 70.83mm x 57.24mm.
- SCIOLUX LED module 3x8 format (CHI Family).
- 300mm cable with IP66 connector of 2 poles.
- LEDIL optic.
- 60W maximum.
- IP66.

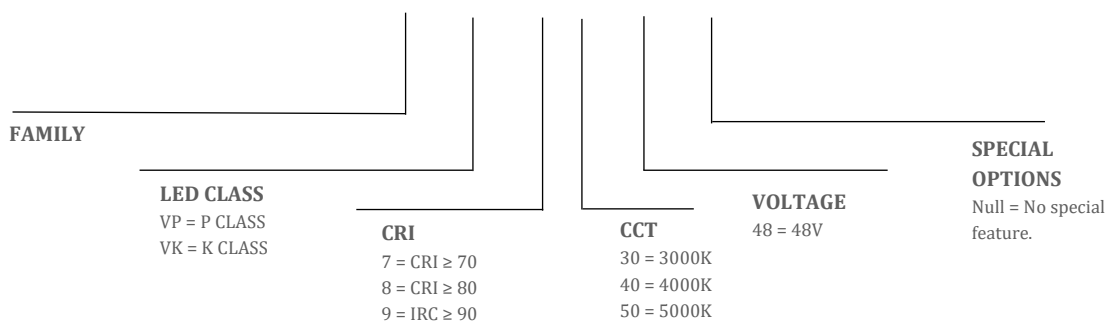


APPLICATIONS

- Streetlight
- High Bay Luminaire
- Sports luminaire
- Reflector

Order code

KIT-CHI - VK - 7 40 - 48 - XX



ELECTRICAL SPECIFICATIONS

Family	I _f Nom. (mA)	I _f Max. (mA)	V _f Nom. (V)	T _c Max. (°C)
KIT CHI-VK	600	1350	44.40	85

PRODUCT SELECTION TABLE

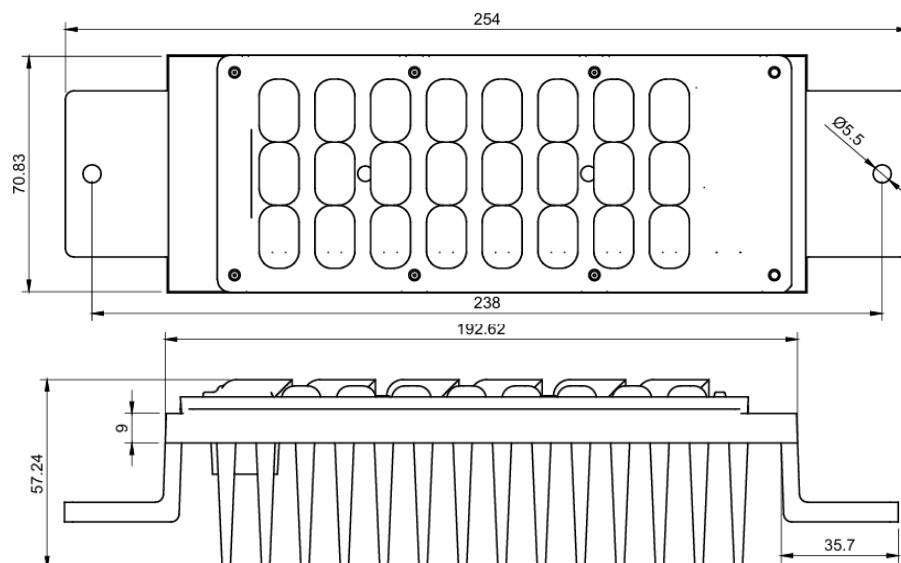
CHI VK— Nominal conditions (T_{sp} = 55°C), Maximum conditions (T_{sp} = 85°C), CRI 70

ORDER CODE	CCT	CRI	48V @ 600mA				48V @ 1350mA	
			Min. Flux (lm)	Nom. Flux (lm)	Nom. Efficacy (LPW)	Nom. Power (W)	Max. Flux (lm)	Max. Power (W)
KIT-CHI-VK-750-48	5000K	70	4,666	4,860	188	25.87	10,001	60.37
KIT-CHI-VK-740-48	4000K	70	4,666	4,860	188	25.87	10,001	60.37
KIT-CHI-VK-730-48	3000K	70	4,428	4,622	179	25.87	9,526	60.37

Notes:

- Flux and power conditions shown for reference.
- Available in existing color temperatures.
- The value of the table includes 10% optical loss.

DIMENSIONS (mm)



Notes:

- Measurements represented in millimeters.
- You can request the mechanical file to the following email: ingenieria@idc-componentes.com or to your sales executive.

ACCEPTABLE TERMS OF USE

- These products are electronic components designed to be used exclusively in complete end products. They must not be used as autonomous elements or for purposes other than those previously mentioned.
- The installation of this product in the final product is subject to any additional requirements that may be applicable in accordance with the rules and regulations governing the final product. These requirements shall be verified during the evaluation of the final product and shall be met to ensure the safety and functionality of the final product.
- These components must be installed in the final product according to the requirements of enclosure, accessibility, wiring, segregation, assembly, and space indicated in the specifications of the final product. The suitability of the facility will be determined during the certification assessment of the final product.
- When these components are installed in a final product that is designed for use in wet or wet places, the applicable requirements, and tests (e.g. rain test, moisture test, etc.) must be met in accordance with the rules and regulations governing the final product. These tests should be performed after the components have been installed in the final product. The suitability of the components will be determined during the certification evaluation of the final product.
- The use of these products implies acceptance of the terms and conditions established by the manufacturer. Failure to comply with these terms and conditions may invalidate the product warranty and exempt the manufacturer from any liability for damages.
- Products must be stored in a suitable place, free of moisture, dust, direct sunlight, and corrosive chemicals. Improper storage can affect the performance and shelf life of products.